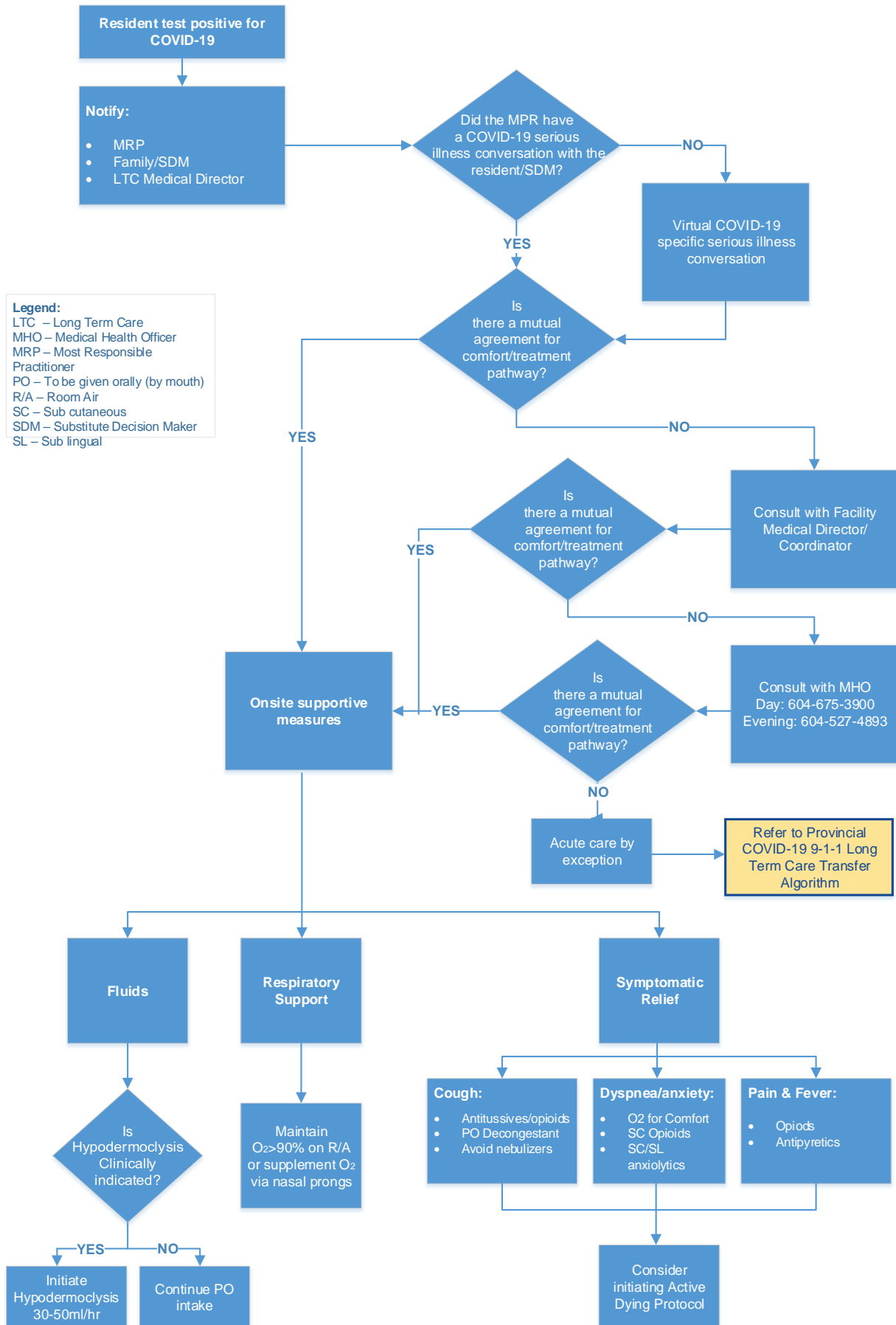


## Clinical Decision Pathway COVID-19 in LTC Residents

This algorithm assumes Public Health Authorities are involved and are coordinating outbreak in facility, and is meant to aid clinicians to manage care of residents with COVID-19 LTC



**Legend:**  
LTC – Long Term Care  
MHO – Medical Health Officer  
MRP – Most Responsible Practitioner  
PO – To be given orally (by mouth)  
R/A – Room Air  
SC – Sub cutaneous  
SDM – Substitute Decision Maker  
SL – Sub lingual